

FRONT VIEW - DRUM VIEW

3532

422

1049

B

C

348R

Stroke between mecalan stopper: $2 \times 1121 = 2242$

480

1121

Guiding bar
Nickel - Chrome

Spooling screw
with trapezoidal filet
Tr: 90 - pas: 12

stroke between limit switch : $2 \times 1115 = 2230$

390

1115

Limit switch

Scale: 1 : 2,5

Roller of spooling carriage
515

Dimensions and Callouts:

- Overall length: 515
- Central shaft diameter: $\varnothing 515$
- Internal shaft diameter: $\varnothing 514$
- Internal shaft diameter: $\varnothing 493$
- Internal shaft diameter: $\varnothing 80$
- Internal shaft diameter: $\varnothing 40$
- Height of roller: 18
- Height of base: 68
- Width of base: 34
- Height of base: 20
- Height of base: 5

Callouts for parts and dimensions:

- 39, 43, 38, 32, 20A, 19A, 37, 15B, 9B, 35, 36, 17A
- 5B, 27B, 25B, 20A, 40, 35, 19A, 6A, 41, 42
- 21, 13B, 14B, 15A, 16A, 5B, 7B

Technical drawing of a spooling device, SECTION E-E, showing a side view with dimensions and labels.

Dimensions and labels:

- Top dimensions: 650, 133,5 CoG
- Left side dimension: 1510
- Internal vertical dimension: 174 CoG
- Internal horizontal dimension: 345
- Bottom dimension: 1200
- Labels: 2B, 1B, Cs: 255 Nm, 64, A, D, F, To Inboard compensator, F nominal mode: 1350 daN, F down graded mode: 3000 daN, Spooling device adjustment See DWG 854 M 2100 2/2, To drum

Scale: 1:5

Fig. 1

Technical drawing of a mechanical assembly (Fig. 1) showing a cross-section of a housing with a rotating shaft and a pulley. The drawing includes a scale of 1:5 and various callouts for components and dimensions.


Callouts and dimensions:

- 2: Dimension line for the pulley diameter.
- 3: Callout for the top housing flange.
- 4: Callout for the bottom housing flange.
- 41: Callout for the shaft-housing interface.
- 5: Callout for the pulley assembly.
- 1A 3B: Callout for the pulley rim.
- 4B 5B: Callout for the pulley hub.

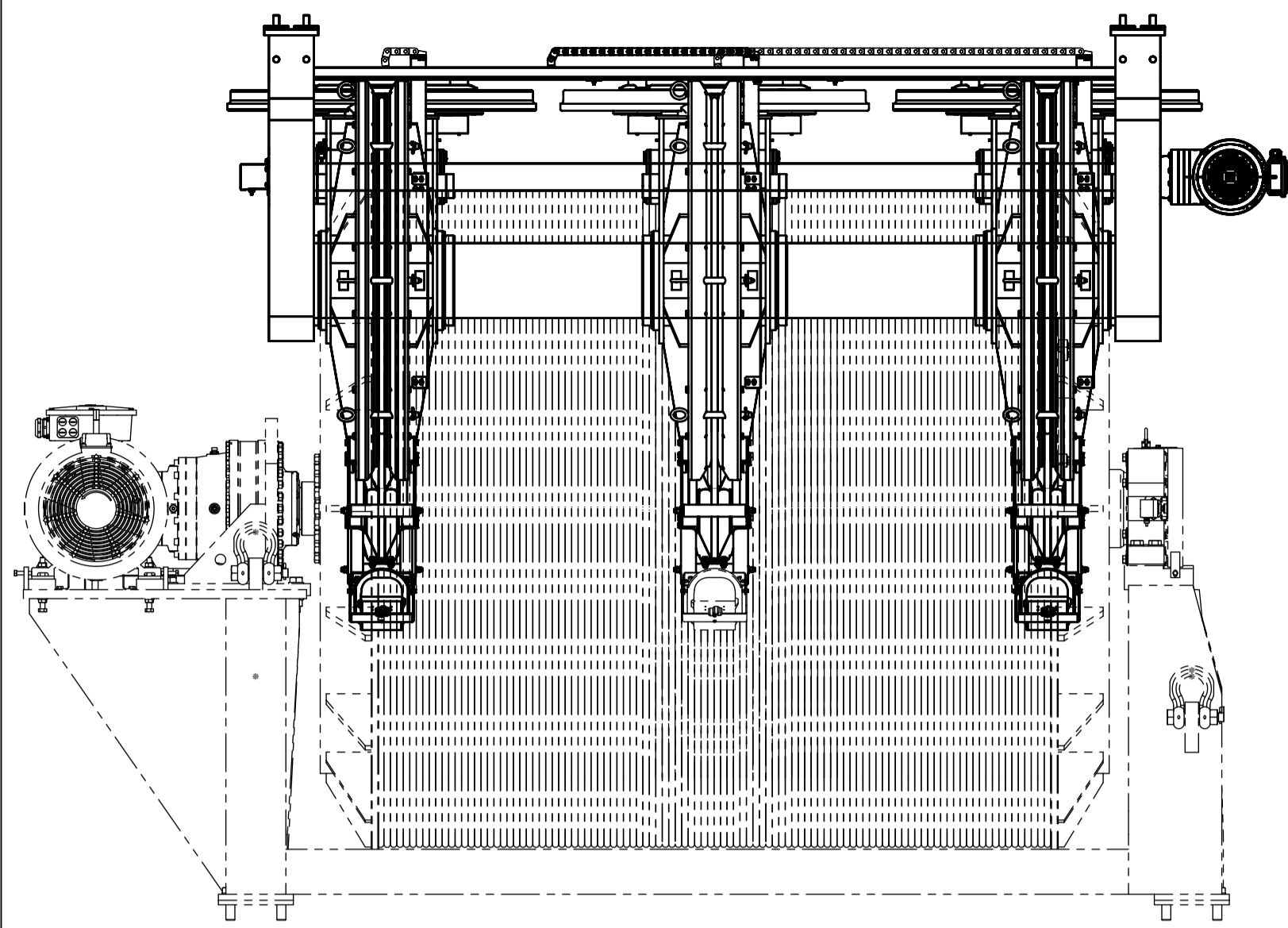
Scale: 1 : 2.5

44

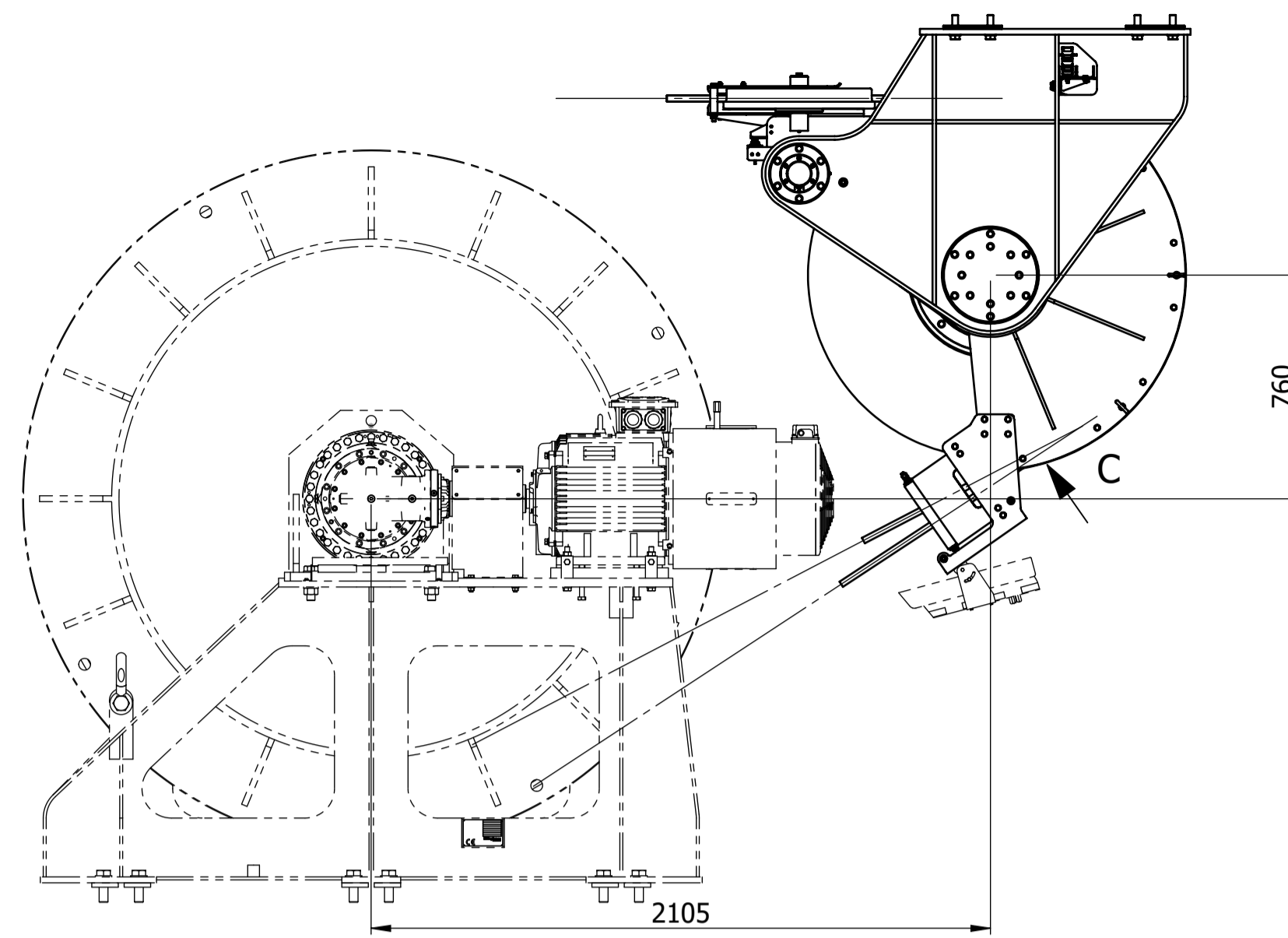
22A

 Kleyfrance LIFTING SOLUTIONS	PROJECT	57-IFR-23	
	TITLE	Treuil Grand Fond N/O Pourquoi Pas ?	
	SCALE	1:10	
	SHEET NUMBER	A0	854 M 230

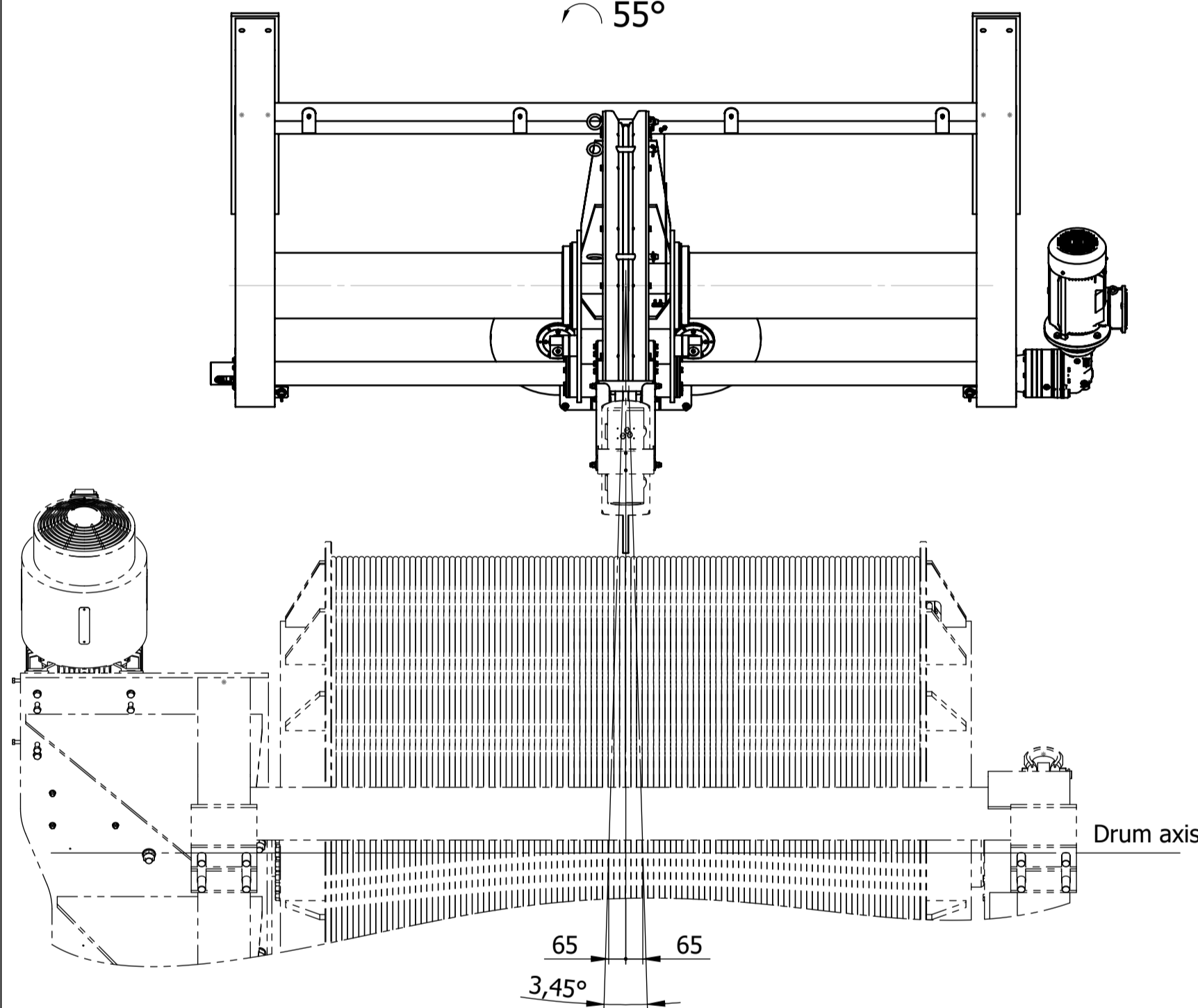
STARBOARD VIEW



REAR VIEW

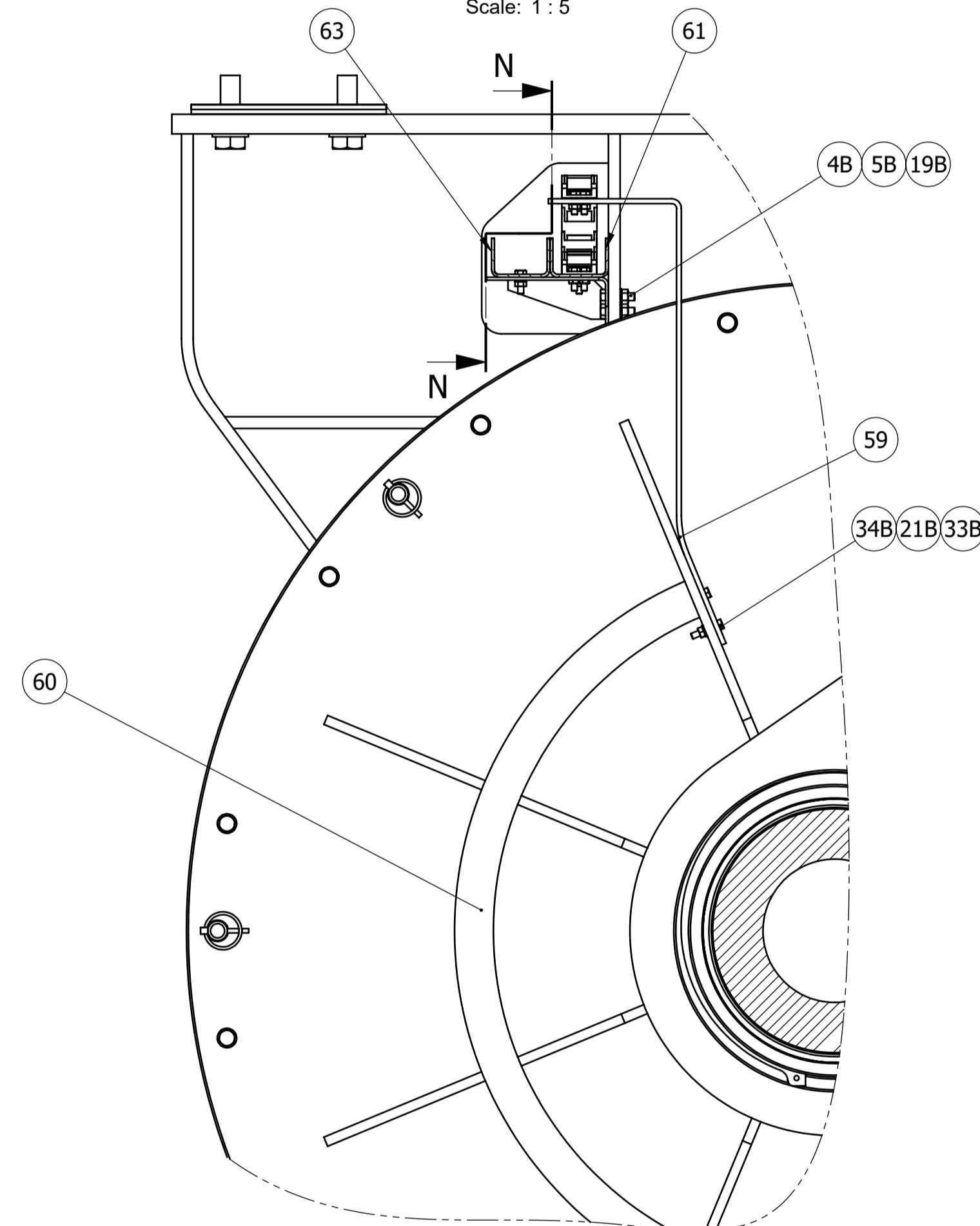


VIEW C
55°

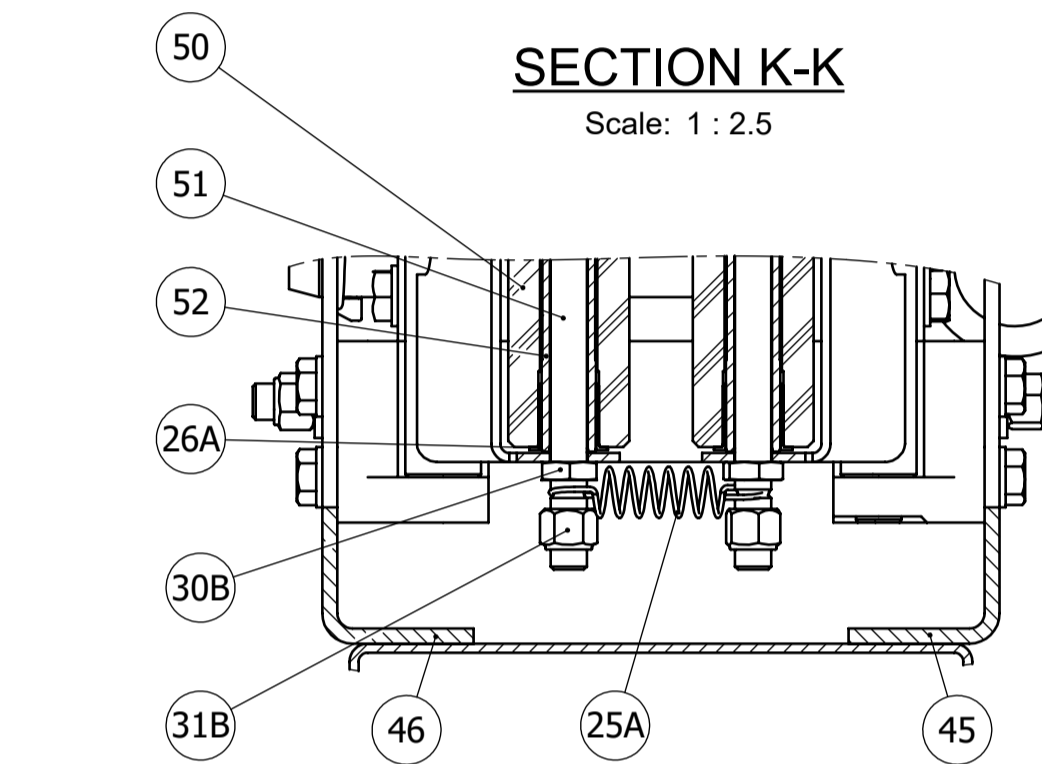


SECTION M-M

Scale: 1 : 5

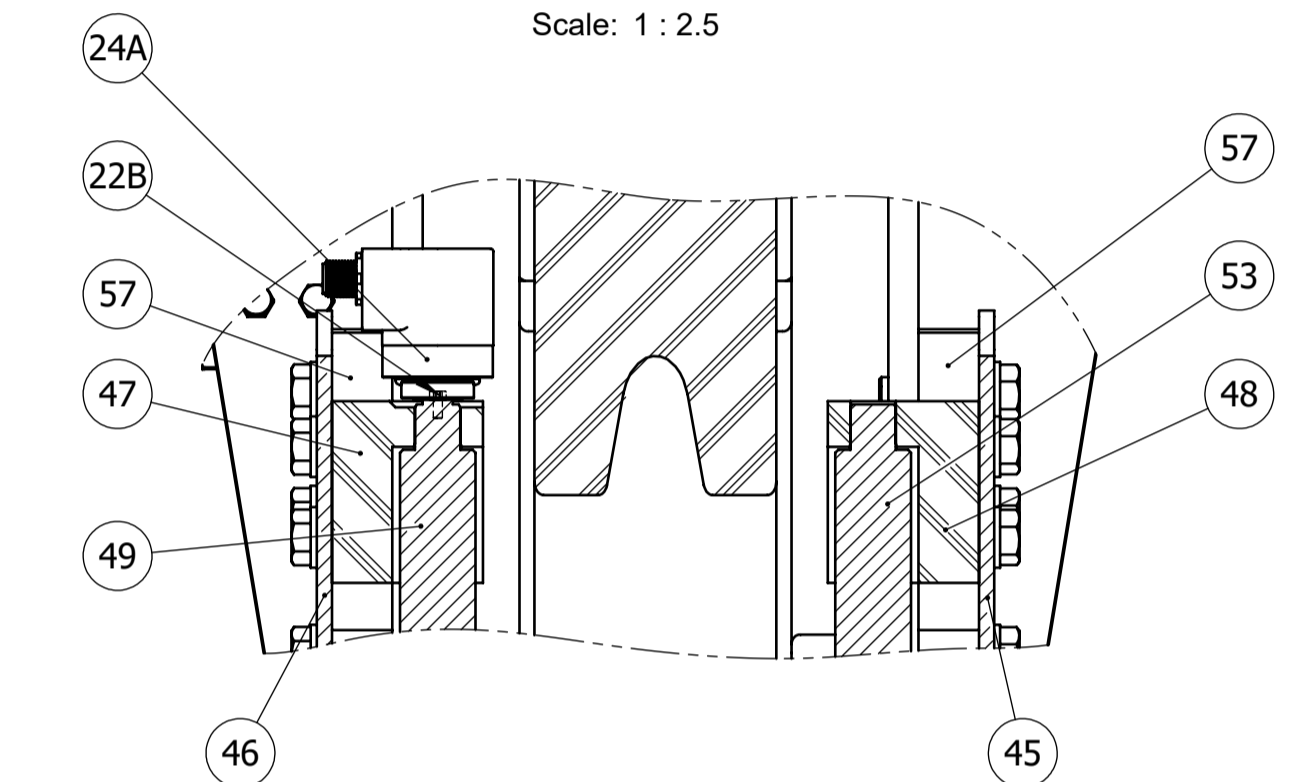
SECTION K-K

Scale: 1 : 2.5



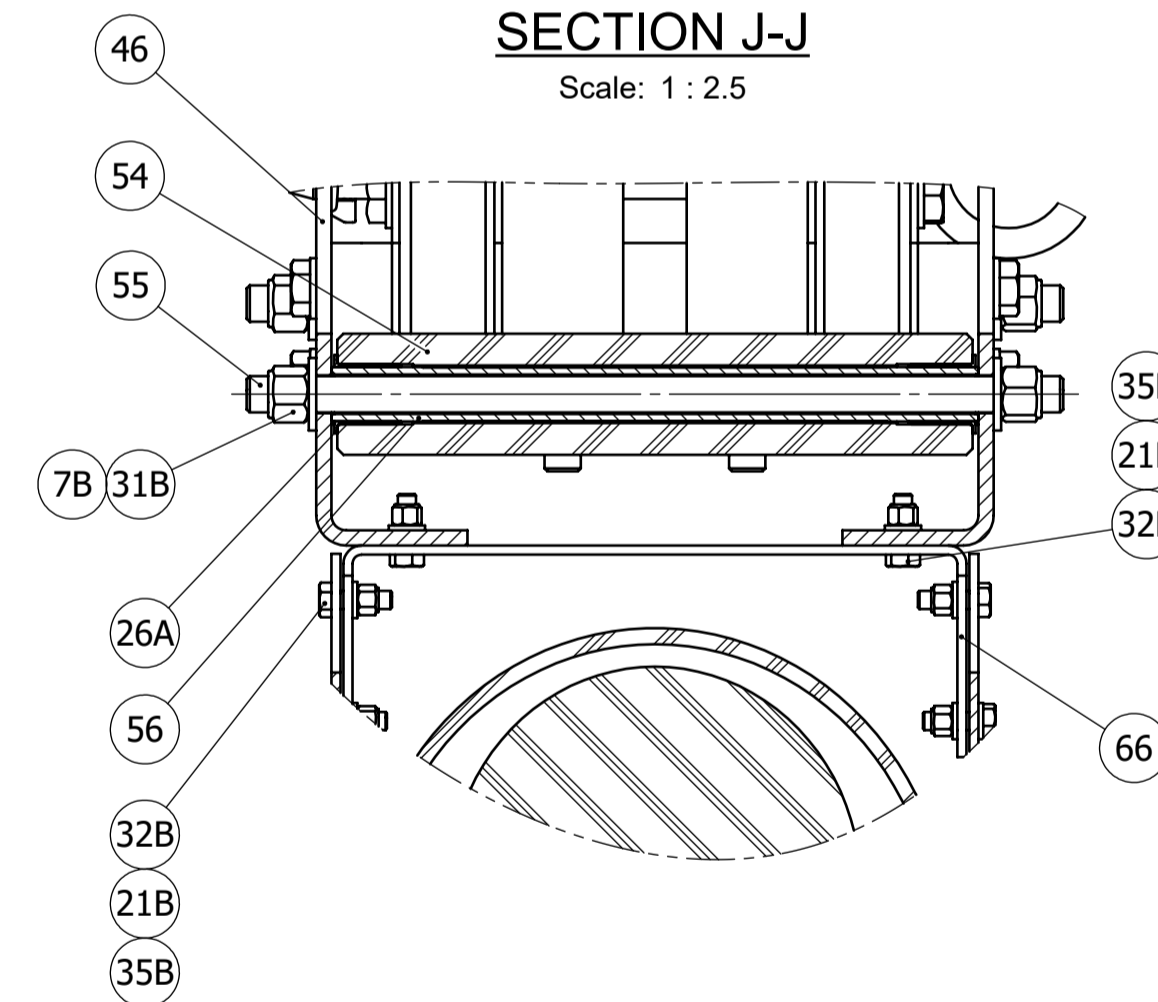
SECTION L-L

Scale: 1 : 2.5



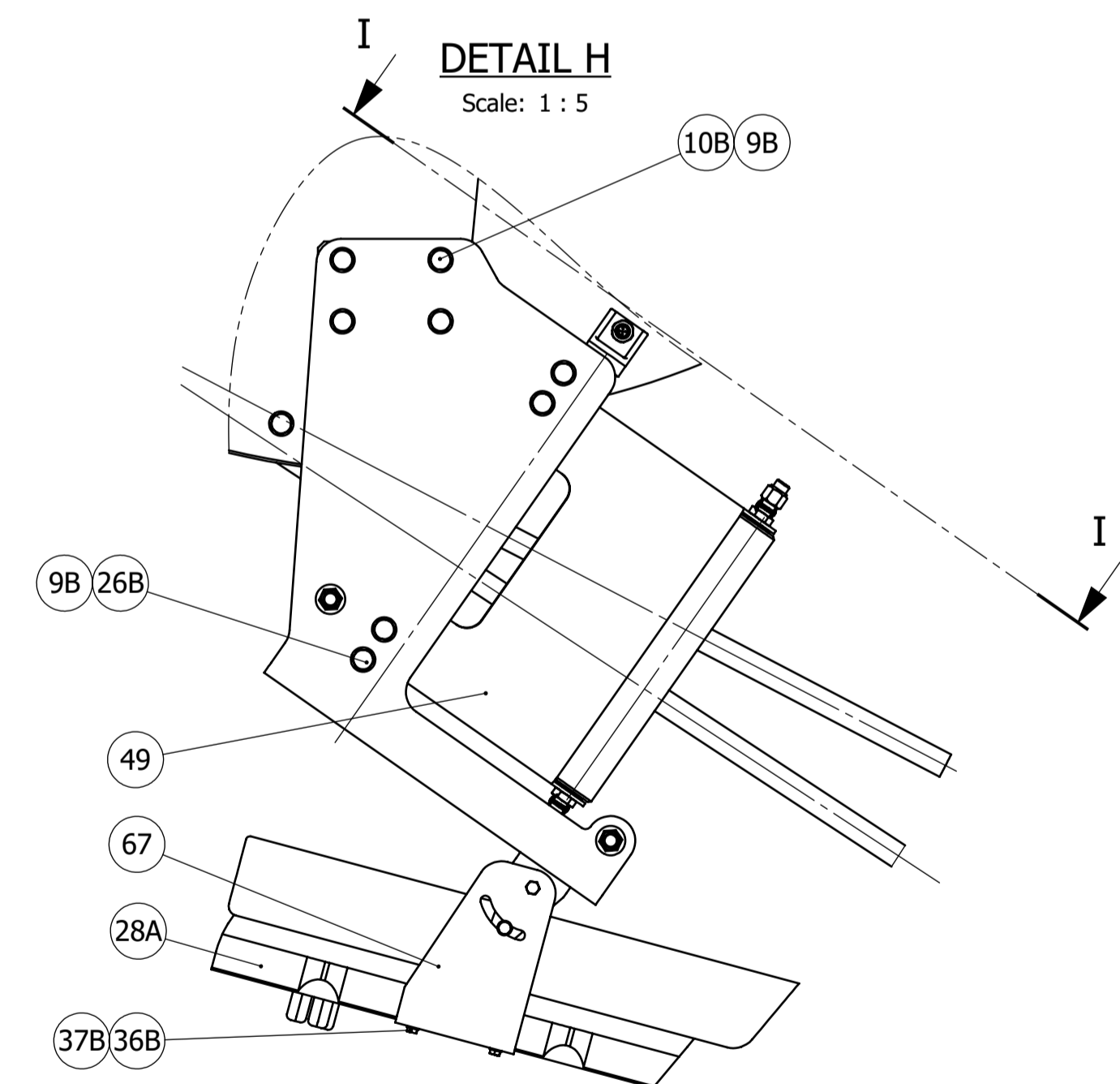
SECTION J-J

Scale: 1 : 2.5



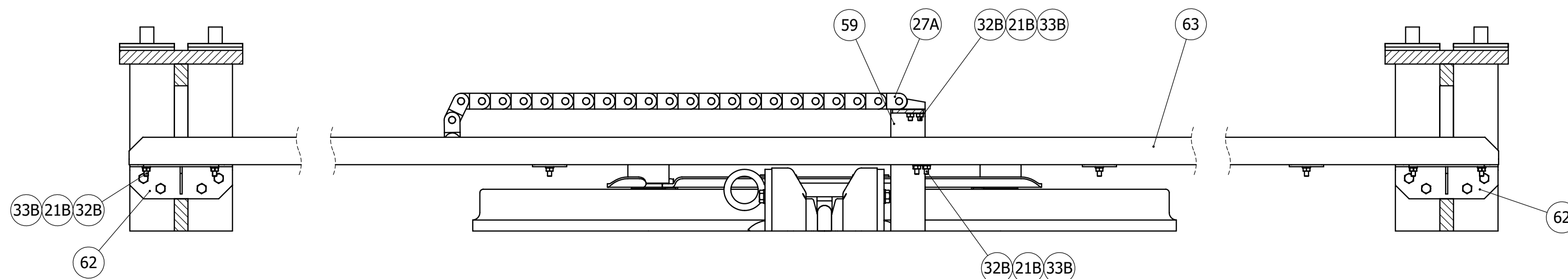
DETAIL H

Scale: 1 : 5



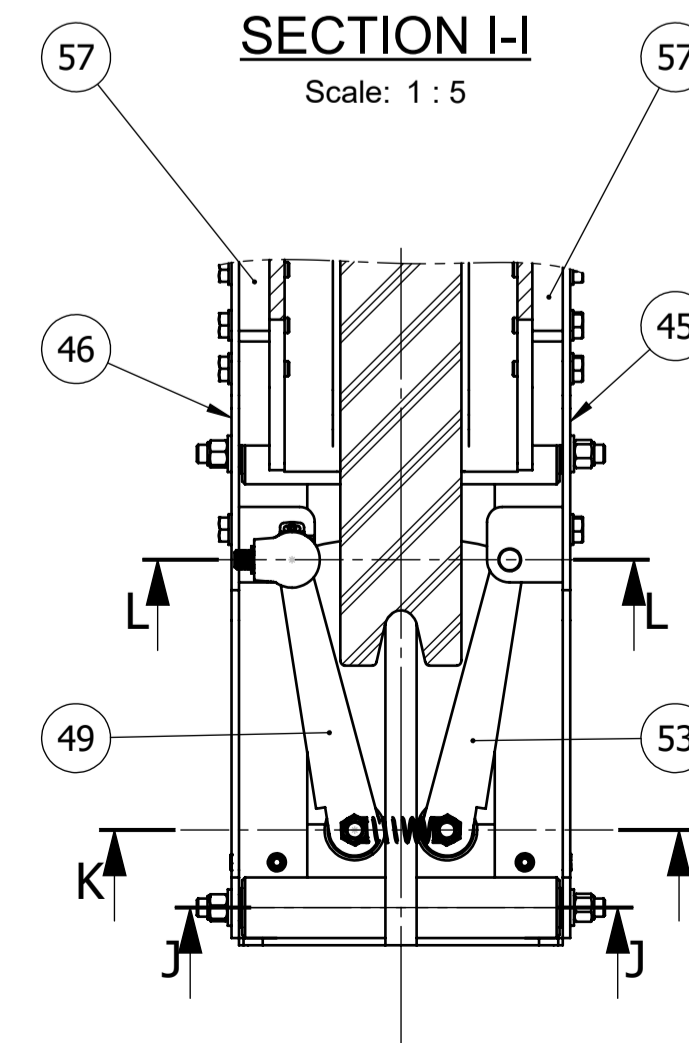
SECTION N-N

Scale: 1 : 5



SECTION I-I

Scale: 1 : 5



2	22/10/2024	Add & Modif camera & housing references Modif. of fixing dimensions 510 -> 500	DCO	JLS	YBE
1	26/09/2024	Modif items 9, 14 - 88	DCO	JLS	YBE
0	29/08/2024	For construction	DCO	JLS	YBE
A	19/08/2024	First issue	DCO	-	-
REV.	DATE	MODIFICATION	AUTHOR	CHECKED	APPROVED



Kleyfrance
LIFTING SOLUTIONS

Immeuble Le Concorde
4, rue Jacques Daguerre
92500 RUEIL-MALMAISON (F)
TEL: +33 (0) 1.41.39.86.70
www.klevfrance.fr

57-IFR-23

Treuil Grand Fond N/O Pourquoi Pas ?

SCALE	1:20	SIZE	A1	NUMBER	854 M 2100
-------	------	------	----	--------	------------

Jouvence du N/O « Pourquoi Pas »

PAGE 2 OF 2